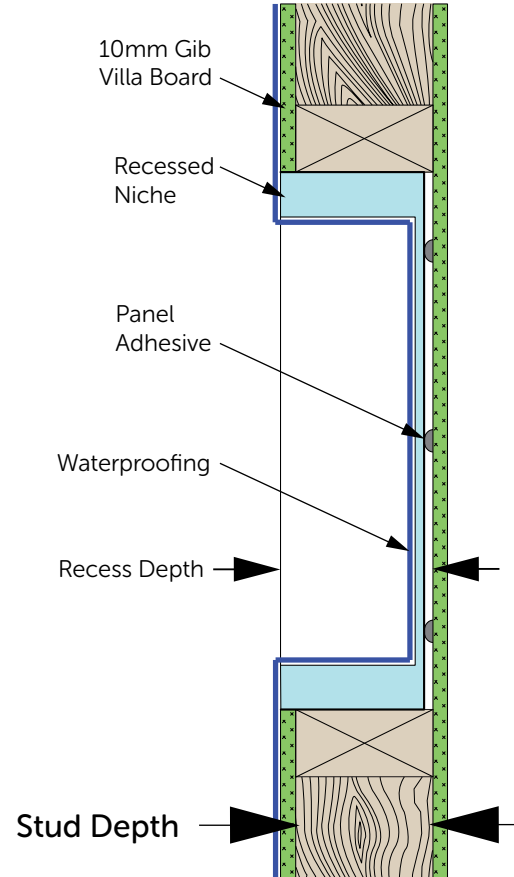
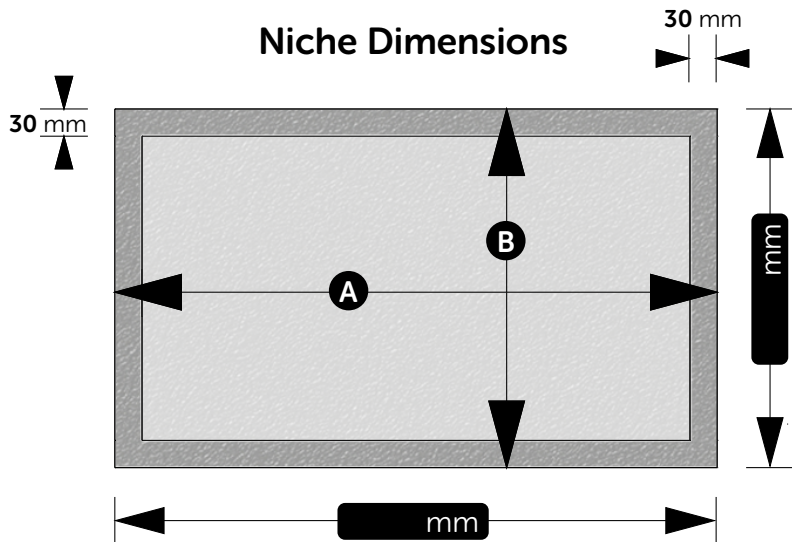
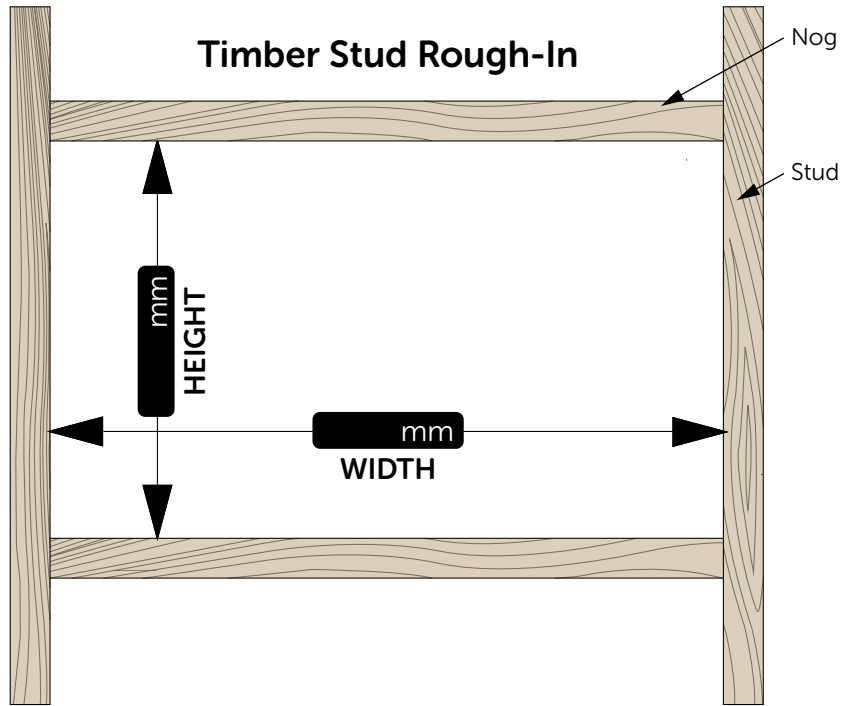


# RECESSED NICHE

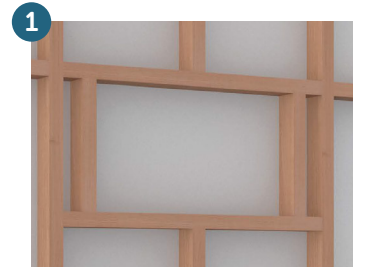
# ROUGH IN GUIDE



Type	Stud Depth	Actual Niche Size	
		A	B

\*Excludes Tiles

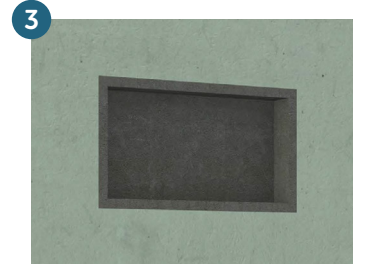
**MODEL: X**



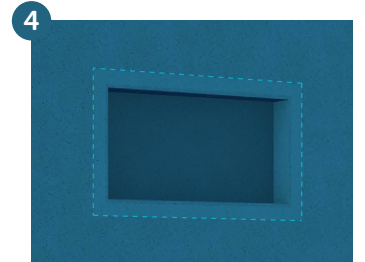
1 Rough-In timber framing to support niche - Ref (Rough-In Guide)



2 Fix Gib/Villa Board, dry fit niche, remove and apply adhesive



3 Install niche, ensuring front face is flush with front face of Gib/Villa Board



4 Apply butyl tapes and waterproof shower walls and niche