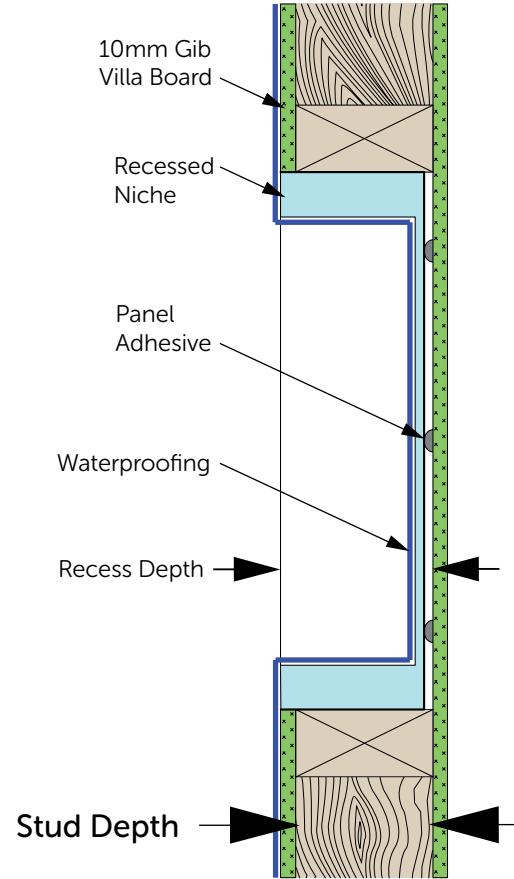
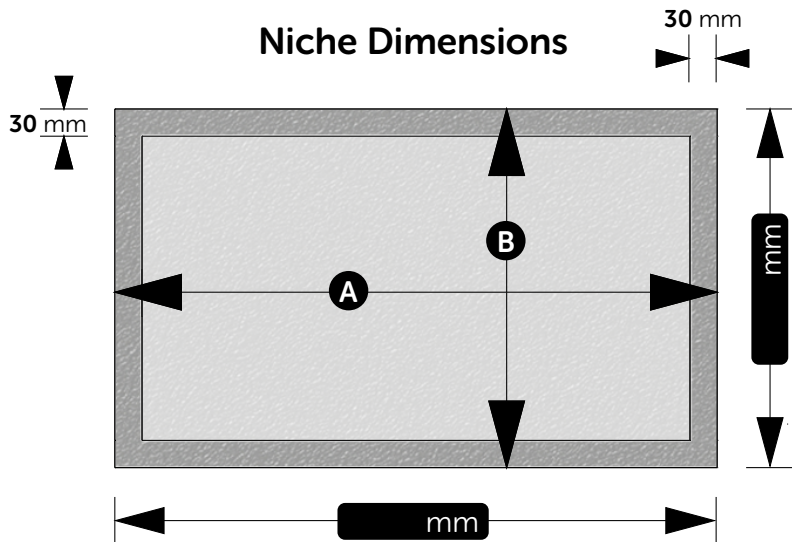
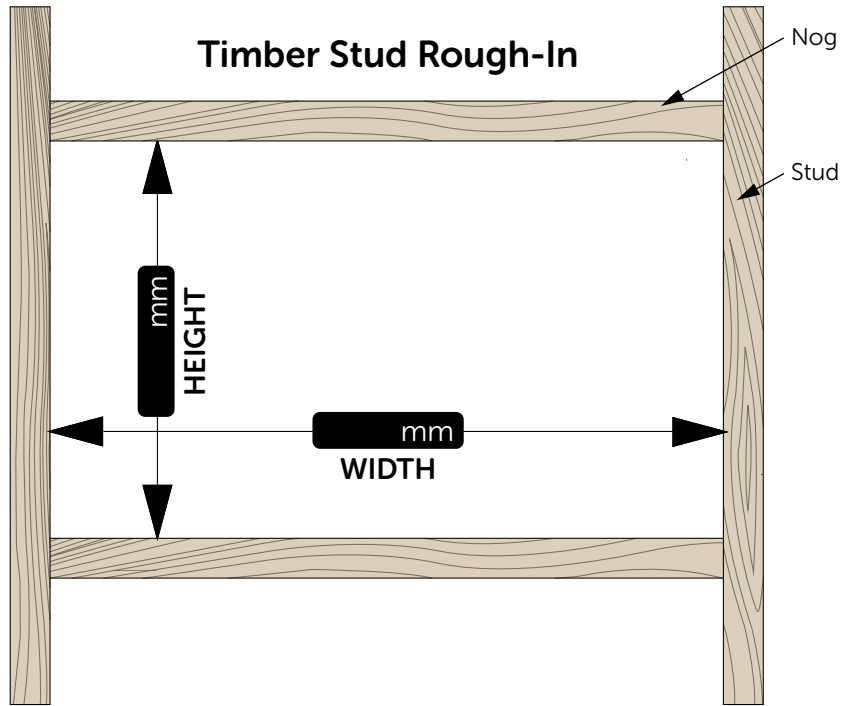


# RECESSED NICHE

# ROUGH IN GUIDE



Type	Stud Depth	Actual Niche Size	
		A	B

\*Excludes Tiles

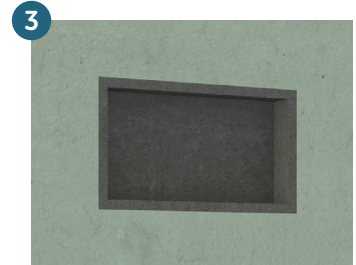
**MODEL: X**



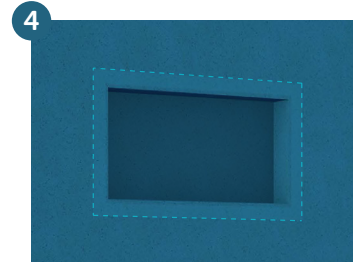
Rough-In timber framing to support niche - Ref (Rough-In Guide)



Fix Gib/Villa Board, dry fit niche, remove and apply adhesive



Install niche, ensuring front face is flush with front face of Gib/Villa Board



Apply butyl tapes and waterproof shower walls and niche