

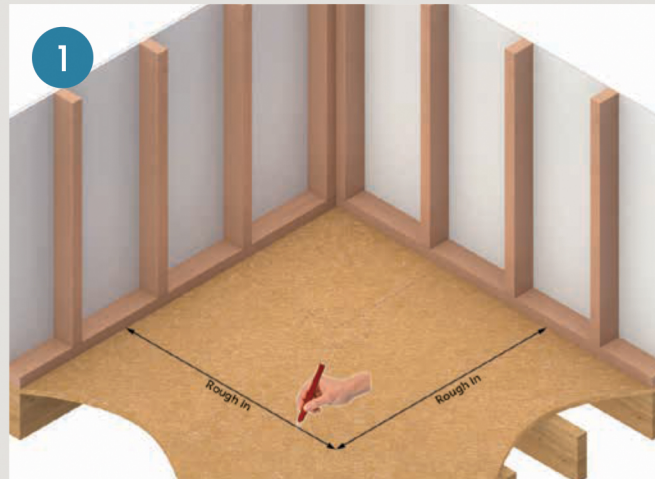
wafer® Base Installation

Specifically designed

for timber floors.

Oben makes it Easy!

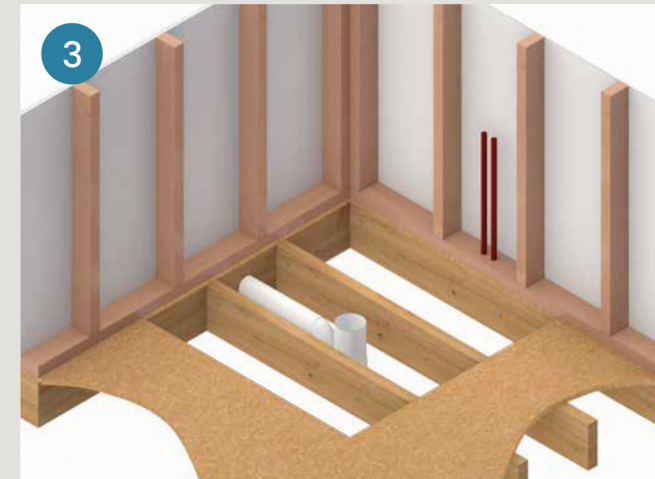
A revolution in Level Entry Base Design



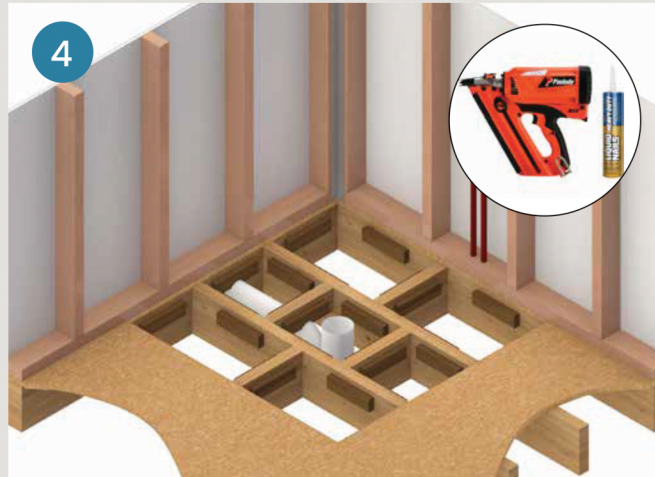
1 Mark outline of base on timber floor.



2 Cut out 20mm flooring and remove.



3 Install plumbing (drain riser, hot and cold water pipes).



4 Fix nogs or extra joists where required, to provide support to all edges of the ply infill.



5 Infill between joists with marine ply or compressed sheet. Glue & screw into position.



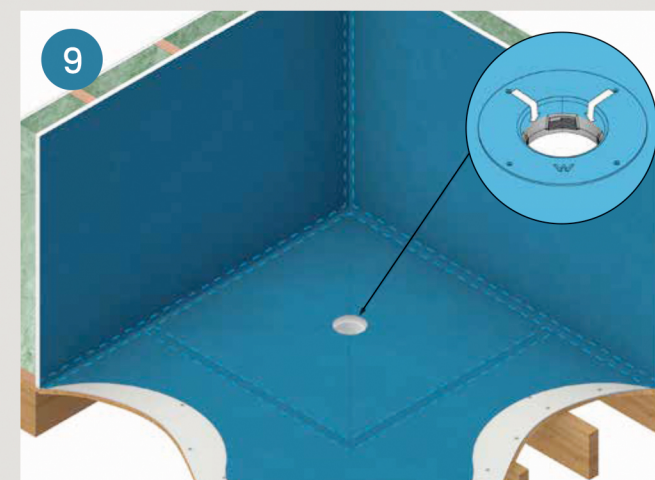
6 Install Gib/Villa board walls ensuring it follows rebate in base profile.



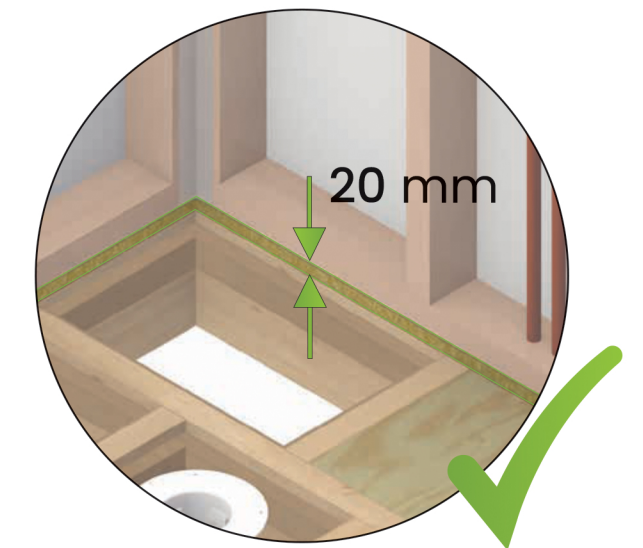
7 Fix Tile & Slate to floor outside shower pan area. Apply adhesive - 24 hour cure time.



8 Fit wafer® base and weight down with adhesive pail filled with water.



9 Apply butyl tapes and waterproof floor and walls. Excludes waterproofing - supplied by others.



- Ultra Low 24mm Profile
- No Joist Rebate required
- Quick and Easy Installation
- Fast 2 hour Adhesive Cure



Traditional Level Entry Installation

- Expensive
- Additional Labour and Materials
- Requires Joists to be Rebated